



ShoreLines

Newsletter of the Lauderdale Lakes Improvement Association

Spring 2021 • Vol. 44, No. 1

In-Person Boating Safety Courses canceled...but certification is still required

By Chief Ken Blanke, Water Safety Patrol

Successful completion of a Boating Safety Course accepted by the Wisconsin DNR is **required for anyone born on or after January 1, 1989 (and at least 12 years of age)** who wishes to operate any personal watercraft (PWC) or any motorized boat without an adult onboard. So, if you will be 32 this year (or are younger) you need to carry a Boating Safety Education Certificate to operate a motorboat (without parental supervision) or a PWC.

As you know, our Lauderdale Lakes Water Safety Patrol traditionally holds in-person DNR-sanctioned Boating Safety Courses in May and



Our Water Safety Patrol team (left and center) and the DNR (right) look forward to providing in person classes in the future

June. Unfortunately, due to ongoing protocols surrounding COVID-19, the Wisconsin DNR has notified us that these classes cannot be held in 2021. **This does not change the Boating Safety Course requirement.** Online Certification is available through the Wisconsin DNR at the following link: <https://dnr.wi.gov/education/outdoorskills/onlineEd.html>

Our Water Safety Patrol Instructors look forward to working with students in the future when it is safe for all to resume instruction in a classroom setting in person.



Hazy Sunrise by Jane Marchese Larsen

At a glance...

- **Annual fireworks extravaganza**, Saturday, July 3 at 9:30pm (rain date: July 4). Simulcast with 96.1 FM.
- **The LLIA Annual Meeting** will be held outside at Lutherdale on Saturday, June 12. Watch your mail for a postcard reminder.
- **Help! We need one volunteer** to help manage our website content. No big deal. No special skills required. Contact Kevin.Henderson@comcast.net.
- **The Kid's Fish Jamboree** is expected to be back in full swing on July 17. See details at LLIA.org.
- **Wooden Boat Parades** will depart from the Sterlingworth on July 2 at 4:30 pm and Sept. 3 at 9:30 am.
- **The popular Fire Department Steak Fry fundraiser** is back at Lauderdale Landing on August 14. Mark your calendar.
- **See Calendar of Events** for the Sailing Club, Yacht Club, and KMLT later in this issue.

The LLIA is an All-Volunteer organization devoted to monitoring water quality, promoting water safety, preserving the lakes' natural habitat, creating a superbly stocked fishery, and keeping lake area homeowners up-to-the-minute on what's happening around the area. For more information, visit LLIA.org.

Complimentary Copy! If you're NOT an LLIA member and would like to continue receiving this newsletter, a membership is still just \$35 a year. Simply go to LLIA.org, and complete a membership form.

LLIA Special Reports

Some Of These Plants May Be Pretty But They Also May Be Pretty Harmful To Our Lake

By Elisabeth Partyka, LLIA Director

The UW-Madison, Division of Extension, is working to educate the public about invasive plant species in Wisconsin and hosted an information session recently that several of us from the LLIA attended. Following is a summary of the session.

Lesser Celandine, Non-Native Phragmites and Japanese Knotweed are certainly not the only invasive species of concern in Walworth County, but they are of higher priority right now. Lesser Celandine has taken over areas of Lake Geneva and we are starting to see populations pop up on Whitewater Lake. Japanese Knotweed is found in Whitewater in river and stream beds. All of them could easily make their way to our lakes which is why it's concerning. Early detection is key and so we need to be aware and try to spot these species before they get established.

What is an Invasive Species?

Invasive species are plants and animals that are "out of place". They originate somewhere and arrive in new places, intentionally or accidentally. When they arrive, they lack the diseases, pests and competitors from their original places to keep them in check.

What Impact Do Invasive Species Have?

Invasive species directly impact the environment by reducing biodiversity, reducing native species habitat quality, and may cause issues for water availability or be fire hazards. They reduce land value and quality, lower crop productivity and incur high costs to control them. There may be direct human health impact and reduced recreational opportunities.

What Can be Done to Stop Invasive Species?

Regulations are in place to prevent transport, transfer or sale of certain species and some species are required to be removed. Beyond that, the focus is on early detection

to eliminate pioneer populations and progressive work to control the species back to the main source. Then there is also spread prevention through efforts like decontaminating equipment, clothing, tools, pets, stopping aquatic hitchhikers when transporting boats and equipment from one water source to another and cleaning earth movement equipment.

What Do These Plants of Concern Look Like?

Lesser Celandine is a yellow flowering plant with heart-shaped glossy leaves usually found in moist low areas, growing in clusters. They come out in early spring and die off by the end of June. They have underground tubers and develop small white bulbils after flowering. They look very similar to the native Marsh Marigold (which is not a problem). These native plants have much larger leaves relative to its flowers and have no underground tubers or bulbils.



Lesser Celandine, photo Wisconsin Department of Natural Resources

Non-Native Phragmites are a tall exotic perennial grass growing up to 18 feet tall; native varieties are around 10+ feet tall. Non-native plumes are large, thick, purple/brown/tan, 6-20 inches long, and up to 8 inches wide. Native plumes are feathery,



Non-native Phragmites, photo Elizabeth J. Czarapata

much smaller and never purple. Both tops contain long silky hairs that may stay on throughout winter.

Japanese Knotweed has 4-6" long leaves, squared off at the base which grow on zig-zag stems. It has small greenish/white upturned flowers and hollow asparagus-like stems that resemble bamboo canes. This plant can punch through pavement and building foundations.



Japanese Knotweed, photo Wisconsin Department of Natural Resources

What Should I Do If I Locate Any of These Species?

If you find any of these invasive species, take several photos of your findings, up close from several angles to identify the plant features and farther away to show how and where it is growing. Note the date, time

and GPS location. Share this information in one of three ways:

1. Website: eddmaps.org
2. Phone App: GLEDN (Great Lakes Early Detection Network)
3. E-mail: WIFDNcoordinator@gmail.com

To dispose of these plants, put them in a sealed clear plastic bag and attach a large label that says "Invasive Species" and put in your trash container. They shouldn't be composted.

What Can I Do to Help Prevent the Spread of Invasive Plant Species?

- Use native plant species whenever possible
- Dispose of seeds in the trash

Water and Ice Quality Update

By Dave DeAngelis, LLIA Water Quality Chair

The official ICE-ON dates for this winter were 12/27/20 for both Mill and Middle Lakes. The Green Lake ICE-ON date was 12/29/20. ICE-ON is defined as continuous ice across the lake, at the deepest point, from shoreline to shoreline. It was a bit of a late start to the ice cover season, but the intense cold weather in February brought the ice thickness on our lakes to well over 12 inches thick in many locations. Historically, we like to see full ice cover for a minimum of 60 days, but closer to 100 days is preferred. Longer ice cover helps with weed kill. The ice cover also decouples the lake from the atmosphere and protects it from traditional sources of debris and pollution. In many lakes, oxygen depletion is a concern but, in our case, the lakes are spring fed, and a steady supply of fresh water allows the oxygen levels to remain stable during ice cover. Lastly, the ice cover inverts the temperature profile of the lake (compared to summer) in that an ice-covered lake is warmer at the bottom and colder at the ice/water interface. This allows oxygen levels to be relatively consistent throughout the entire lake, even in the deepest locations.

- Be on the lookout for invasive species and report findings
- Respond aggressively to rid your land of new invasive species
- Leave native trees and plants alone; natural landscapes offer the best defense
- Never transplant water garden plants into lakes, streams, wetlands or storm water ponds
- Check plant orders for unwanted and potentially invasive hitchhikers (seeds, plant fragments, snails, insects, fish)
- Inspect your boat, trailer, equipment, removing any attached aquatic plants or animals (before launching, after loading and before transporting on public roads)
- Drain all water from boats, motors, equipment

For those of you who are interested, I've included the steps for you to access our lake water quality data on the Wisconsin DNR website.

Go to dnr.wi.gov

At the top of the screen, click ENVIRONMENT

Click on the box that says LAKES

Click on the box that says LAKE WATER QUALITY DATA

Click on WALWORTH COUNTY

Select the lake data that you wish to see: Green Lake is #653123, Middle Lake is #653124 and Mill Lake is #653125.

Click DETAILS

Now you can decide what type of data you wish to see by year: Click ANNUAL REPORT to see our raw data.

Click NARRATIVE REPORT to see the Wisconsin DNR interpretation of our raw data.

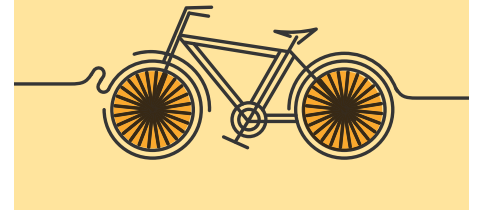
Click SECCHI GRAPH to see how water clarity has trended for several decades.

Feel free to click TROPIC STATE INDEX GRAPH, but I must warn you that this data is reserved for only true nerds. Please use caution.

Walk Against and Bike With!

Many people walk and ride bicycles on roadways around the lake. To help everyone safely enjoy our beautiful lake area, please follow the following rules:

- Pedestrians should walk **AGAINST** the flow of traffic, so they can see the vehicles closest to them as they approach
- Cyclists should ride **WITH** the flow of traffic (using the bike lane where available), since cyclists are considered "vehicles" for most intents.
- In all cases, it is safest to walk or ride in single file as close to the shoulder as possible so drivers have adequate space for oncoming vehicles, particularly on hills and curves.



Single Website Seeks Companion

Do you have an internet connection and an interest in helping tell the world about the LLIA? The Web Site Committee is seeking one additional person to help manage content on LLIA.org. No programming skills are required, and training will be provided. Please contact Kevin Henderson directly at Kevin.Henderson@comcast.net



Corky's Corner

Tight Lines And Bent Rods!

By Jim "Corky" Corcoran, LLIA Fish Committee Chair

Corky here, hoping the snow and ice will melt soon! It's time to start thinking about the fun in the sun we are going to have this summer. I went back by the boat ramp in the springs and saw open water all the way to my pier. In goes the pontoon!



Winning Bass Kids' Division: Katrina K., 15 inches

I want to update you on the great ice fishing season we had and the great catches from Fishapalooza 2021. This ice season has been very productive for many anglers (not myself) and lots of healthy fish have been caught. The Walleye bite was great and the up and coming Perch fishery looks to be awesome in the next few years. Many decent sized Perch have been caught and the late ice season we are having looks to be good for Perch and Crappie.

Fishapalooza was a more tame event this year, but we had a great turnout with 111 anglers registered. The bite was slow, and we had a



Winning Pike Men's Division: Brian K., 34.5 inches

morning temperature of negative 6° and a high of 6° above! We had a total of 23 fish entered and quite a few nice fish were measured. Brian K. and his girls were on fire, Brian won big Pike at 34.5 inches and Walleye with a 21.5 inch! His daughter Katrina had a 15 inch Bass to win the Women/Kids division! Kassidie B. won the Women/Kids division with a beautiful 32.25 inch Pike. We are planning next year's event already and hope to revive the after party now that we *might* be returning to some sense of normalcy. Thanks to all who helped in planning and to the anglers who braved the cold!



Winning Walleye Men's Division: Brian K., 21.5 inches

As for dreaming about warmer weather, we have begun thinking about the Kids' Fish Jamboree for 2021 and as of now we are planning to host the full program like in past years; we will post all updates and information on the LLIA website. I plan to have Corky's School of Fish up and running with my local Lauderdale Lakes "expert" guides ready and willing to teach kids and their families how to enjoy the fishery we call home! We will host the kids fishing contest and we hope to have programming from KMLT, Lakeland Animal Shelter and the LaGrange Fire Department as well. More details will be posted on the LLIA website. Meanwhile, save the date: July 17th. The Yacht Club will also be hosting the Rib Cook Off and after party in collaboration with the Fish Committee that afternoon. Details also to come, watch for all updates on the LLIA website at LLIA.org!

This summer we plan to build 4 large fish cribs and place them in areas that currently have cribs to enhance the "reef" effect in those areas.



Winning Pike Women/Kids' Division: Kassidie B., 32.25 inches

We will be working Wednesday evenings at 5:00 pm in the Lauderdale Landing parking lot. Feel free to come join in the fun; we need all the help we can get. We typically work for about two hours and can complete one crib per session. We generally have all the tools necessary, bring gloves and eye protection and a strong back! Occasionally we will need a chainsaw or two and we can discuss that when we get closer to our starting date in early June. More information will be posted on the LLIA website (LLIA.org) in the near future.

The fishing regulations that were posted for Lauderdale Lakes two years ago are still in place. We are still trying to enhance the Bass fishery and would encourage you to harvest your 5 bass under 14 inches per day. Anecdotal data has suggested our Largemouth Bass population is much healthier and the average size being caught is larger than in the past few years, suggesting that the special regulation has been successful. After our next comprehensive population survey to be conducted by the DNR, we should probably see the special Bass regulation be revisited. As for now, help do your part in assisting us with the Bass population and continue to harvest the 14 inch and under Largemouth Bass.

Hopefully we can transition back to a normal lake life this summer and get out and enjoy the awesome resource we have in our backyards. I know I will be out casting a line, stop by my boat and say hello! And as usual, **take a kid fishing!**

History Column

LL1 on our Lakes: A Welcome Respite

By Kathryn Ingle Calkins, LLIA History Chair

Last summer, Lauderdale was a welcome retreat from the pandemic world, but as the history of the LL1 property shows, it has always been that way.



Bert Warren and his daughter Virginia at the Lauderdale property around 1921, before the LL1 cottage was built.

In 1921, Mr. Albert Dennis Warren, supervisor of the electrical department of Harley-Davidson motorcycles and resident of Wauwatosa, WI, purchased a property of between two and three acres on the northeast end of Green Lake. He bought it from a Mrs. Salisbury for \$750. The property became, "LL1". To the west sat a farm owned by the Taylor family, which later became the Singing Hills Girl Scout camp. This meant that Warren had no near neighbor on at least one side. He probably liked it that way. Until the Warren family sold LL1 in 1963 the cottage never had electricity or running water. Yet, it became a respite from hard work and city living for three generations of Warrens.

A.D. Warren, who went by "Bert", ran into trouble with the property almost from the start. The right-of-way allowing access to LL1 was supposed to run across farmland from Highway 12, but the landowner there had it dug up after Bert would not pay almost \$1,000 per pole to run power to the lot. Instead, Bert made an agreement with the Taylors, who allowed him access to LL1 across their land from Territorial Rd. Bert had lumber hauled across the Taylor property to build his cottage, a small home balanced on a frame that was raised off the ground on wooden poles. Bert's grandson, Gregg Warren, later recalled that the cottage had two bedrooms created with a beadboard partition rather than a proper wall. The cottage also had a great room with a small wood stove for heat and a kitchen with a New Perfection kerosene stove. According to Gregg, refrigeration was limited to an



LL1, built in the early 1920's, as it looked originally.

icebox on the porch and a dry well in the kitchen itself. The dry well may have been a failed attempt by Bert to dig a well on the property. It consisted of a large steel tube sunk about 20 feet into the ground with a metal bucket on a pulley system. Items to be kept cool could be loaded into the bucket and lowered into the ground. There they stayed cool at about 50 degrees. A pump in the front yard supplied water, which the kids were required to haul up to the kitchen. A Coleman lantern for light had to be lit outside, as the flame could jump three feet from the top until adjusted. As a kid, Gregg recalled, the lack of electricity and other conveniences "was great."



Dennis Warren (born 1917) at Lauderdale before the cottage was built.

At Harley-Davidson, Bert developed one-way radio communication systems that allowed motorcycles to send signals to a stationary radio or vice versa. Bert installed a radio receiver at LL1 and radioed Roxane when he was on his way, often driving a company motorcycle with sidecar. The radio at the cottage was powered by a small windmill wired to a battery. A large antenna protruded from an oak tree in front of the cottage and could still be seen when Gregg was young in the 1950s and 60s. According to Gregg, police and sheriff's departments nationwide used his grandfather's radio system for motorcycle dispatch (see <http://www.ridingvintage.com/2013/07/early-police-communications.html>).

Bert died of a heart attack in 1934, when his son Dennis was just 17 years old. Some of the Harley-Davidson management attended Bert's funeral and offered Dennis an apprenticeship in the tool and dye division. He worked for the company until the end of World War II. During the war, Dennis's hours stretched to 10 hours a day for six days a week, and the LL1 cottage—which no one could visit because of gas rationing—fell into disrepair.

Then, in 1946, Dennis left Harley-Davidson for General Electric. He married in 1948 and began visiting LL1 again. His son, Gregg, was born in 1951,

Bert's family, his wife, Roxane, son Dennis (Gregg's father) and two daughters, spent most of the summer each year at Lauderdale, while Bert commuted to the property from Wauwatosa on weekends.



The Dennis Warren family enjoying Lauderdale around 1958.

and he and his brother Bruce loved spending time there. Gregg recalled falling asleep to the sounds of conversation and card games in the nearby great room through the thin cottage walls.

The family's first boat was a twelve-foot Thompson rowboat powered by a 3.5-horse Johnson Seahorse motor with a pull rope starter. It was frustrating, Gregg recalled, because about halfway across Green Lake it would overheat and quit. The family then had to wait until it cooled a bit to restart it. A big treat was a trip by boat for ice cream at either the Sterlingworth Hotel in Mill Lake or at another of several establishments around the lakes.

GE shut down every summer during the last week of July and the first week of August for maintenance, which was when employees took their vacations. The Warrens always came to LL1. One year around 1960, the family heard the sounds of heavy equipment, so they piled into the boat and followed the sounds to the end of Middle Lake. There they found the springs area being dredged. Dennis became distraught because the springs area had been so beautiful, with clear water and many fish. The family beached their boat and walked up the hill near the operation to find that the dredgers were filling kettle holes in the terrain with the material they brought up from the lake bottom.

Later, the Warrens graduated to a new boat, an Arkansas Traveller, which was 14 feet long with a seat up toward the bow. The family dogs, which were corgis, loved to stand on the seat and, of course, one went overboard once when the boat hit a stump. The family was horrified as the boat passed over the dog, but it bobbed to the surface and was fine.

Such are the memories that keep our Lakes so valuable.

The current owners enjoying LL1 are Tim Suter, his sister Shawn Ginsburg and their families. Shawn believes the original cottage may form the large house's kitchen today.

Member's Post

Wooden Boats On Lauderdale Lakes

Submitted by Pat Cady

Twenty years ago, Al and Marilyn Busa thought it would be a great idea to tour the lakes, watching for other wooden boats harboring among the piers. They cruised around with Jerry and Carol Petersen. Eventually Marilyn initiated the idea to close the boating season on Labor Day Weekend by organizing a wooden boat parade.

The responsibility to carry on the tradition of the parade was passed on to me in 2010 by Jerry Petersen. The original idea has now been extended to include Fourth of July weekend as well, thereby enabling more residents to see these beautiful boats. Today we have over twenty boats in our fleet.



Marilyn Busa, who came up with the idea for the parade, enjoys a ride on the "Swingin' Shepard", owned by Jerry Petersen

and again on September 3rd at 9:30—weather permitting. The parade departs from Sterlingworth and heads to the north shore of Middle Lake, on to Green Lake, proceeding through the channel around Middle Lake to the Landing, returning back to Mill Lake, on to Don Jean Bay and ending at Sterlingworth.

Looking forward to seeing all of you on your piers sending out a friendly wave across the waves!



Pat Cady carries on the wooden boat parade tradition from the "Olivia Lynn", owned by Ken Cady

Unfortunately, it's difficult to all get together at one time due to engine problems, some in dry dock getting an overhaul, or just being spruced up.

What we refer to as "The Happy Hour Parade" will depart this year from Sterlingworth at 4:30 on July 2nd



Captaining the "Carol Kay" is long time parade organizer Jerry Petersen

All LLIA members are invited to contribute to the MEMBER'S POST. Maybe you have a favorite recipe to share...or a great photo capturing the alluring beauty of our lakes...or maybe you'd like to pass along a thought, suggestion or reflection about life on Lauderdale Lakes. If you have a message to share (in 75 words or less, please) email us at LakeViews@LLIA.org. And please specify if you would like to remain anonymous.



Making Mai-Tais! A temperature of 20 below zero doesn't stop the 40th Anniversary celebration for Rich & Nila Siok with Pebble Beach family and friends.

Lake House Fixin's

Chef Dominic's Fish on the Grill

A perfect recipe for the fish we catch on Lauderdale—especially those undersized bass that Corky encourages us to keep, eat and enjoy. Submitted by: JoAnn and Dominic Sergi

Ingredients:

10 fish fillets (crappie, bluegill, perch, bass)
Italian seasoning
Garlic powder
Basil flakes
1 jar marinated artichokes
¼ cup sun-dried tomatoes
½ jar capers
1 lemon (one half thinly sliced)
Olive oil

Directions:

1. Wash fillets and dry well.
2. Lay fish in bottom of a foil pan.
3. Sprinkle the fillets lightly with Italian seasoning, garlic and basil.
4. Evenly spread artichokes, sun-dried tomatoes, capers and lemon slices on top of the fish.
5. Drizzle a light layer of olive oil around the fish (not on top).
6. Squeeze the other lemon half over the fish.
7. Put on grill at medium heat for approximately 10-12 minutes or until fish flakes.
8. Mangia! Mangia!



While snowshoeing in Petersen Island Woods, it is obvious deer are enjoying the new "pedestrian" bridge built last fall. Photo by Herb Sharpless

Other Lake Organizations

New Faces At KMLT

By Greg Rajskey, KMLT Executive Director

Kettle Moraine Land Trust (KMLT) has a number of personnel changes to announce and we're pleased to make the following introductions. For starters, two new directors were elected to our board since last fall. You can read more about them on our website, but here's a taste.

Len Wardzala is an electrical engineer who lives with his family in rural Lyons Township where he has served on the local Planning Commission for 20 years and was instrumental in establishing their conservation subdivision requirements. Len has been restoring prairie and woodland habitat on his property for 25 years and he currently chairs KMLT's Lyons Biodiversity Project.



Len Wardzala befriends a Black-capped Chickadee

Kathryn Calkins is well known to the Lauderdale Lakes community, as she contributes to this newsletter a regular column on the history of the area. She is a science writer who spends time each summer with her extended family at their lake cottages. Her commitment to conservation causes extends to her Illinois community where she serves as co-vice president of Go Green Wilmette.



Kathryn Calkins in a springtime setting

We've also had a staff change at KMLT. **Sue Heffron** has retired and we have hired **Rachel Tanis** to serve as our new Program Manager. An East Troy native, Rachel grew up on the shores of Lake Beulah. She has 15 years of customer-service experience and is eager to apply her skills to support conservation of our natural areas. She can be reached at Rachel@kmlandtrust.org and would be happy to hear from you.



Changing of the Guard: Rachel (left) takes over from Sue as KMLT Program Manager

We wish Sue Heffron all the best that retirement has to offer and are grateful that she intends to remain an active member of our conservation community.

Finally, we mourn the loss of long-time director **Kenneth Ingle**, who died on January 24 at the age of 82. Ken was a beloved member of the Lauderdale Lakes community; year after year, he and his wife, Betsy, represented KMLT at the annual Kids' Fish Jamboree. The family has requested that gifts in Ken's memory be directed to KMLT, where they will be used to fund a summer internship. Ken's obituary can be found on our website (www.kmlandtrust.org).



Ken and Betsy charm the youngsters at the Kids' Fish Jamboree

Lauderdale Lakes Yacht Club Calendar of Events

By Peg (Thelander) Eggert, LLYC Commodore

The LLYC is ready for 2021, **ARE YOU?** Become a member and join us this season for our fun filled events and the opportunity to meet fellow Lakers. Come on, annual dues are only a \$40 per family. Our spring Flag Hoist newsletter will include an application so please consider joining. Information is also available on our website: llyclub.com

Our scheduled events:

Saturday, June 5th – Cocktails with the Commodore at Fiddlesticks Bistro

Saturday, July 3th – Annual Independence Day Fireworks (see separate article)

Saturday, July 17th – Kids' Fish Jamboree & Rib Cook Off

Friday, July 23rd – Concert on Sterlingworth Bay w/Cork N' Classics

Friday, August 13th – Pleasant Lake "Dine with a Swine" food truck

Saturday, August 28th – LLYC Annual Meeting and Golf Outing w/dinner at Lauderdale Lakes Country Club

Saturday, September 25th – Fall Final Fling Party at Heartwood in Elkhorn

Highlights of the events will be provided in our newsletter and website as will any changes to our schedule if needed.

So, are YOU ready for some fun? We Are!

KMLT SCHEDULE OF EVENTS

Volunteer Restoration Workdays (9am to 12pm):

Friday, April 16, 2021 at Price Park Conservancy, Elkhorn

Saturday, May 8, 2021 at Natureland Park, Whitewater

Contact rachel@kmlandtrust.org or call 262-949-7211 to register for any of these events.

Public Walks (9am to 11am):

Sunday, May 9, 2021 **Mother's Day Bird Walk** at Adam Birding Conservancy, Whitewater

Saturday, July 10, 2021 **Prairie Wildflowers** at Price Park Conservancy, Elkhorn

Other Lake Organizations

Help Us Take The Fireworks Show To New Heights!

By Laura Allen, LLYC Fireworks Committee

The Lauderdale Lakes Yacht Club is the proud sponsor of the annual Independence Day fireworks on the lake. Mark your calendar for Saturday, July 3, 2021 for this year's show. Rain date is July 4th. The show will begin at 9:30 pm over the east end of Don Jean Bay and last approximately 24 minutes. Viewing is best from the water, but you can also watch from the Lauderdale Lakes Country Club where parking is available after 8:00 pm.

This show is funded entirely through donations from homeowners on the lake with a small portion coming from generous local businesses. Our goal is to make the show bigger and better each year but we are faced with some unique challenges for funding in 2021. We recently learned from our supplier that the fireworks industry has been hit with a 100% increase in shipping costs—just one more consequence of COVID-19. Additionally, China has closed about 40% of firework factories due to safety compliance issues. So, we are anticipating an increase of 30-50% in cost of goods. We are extremely grateful to the homeowners and businesses that have faithfully donated in the



Fireworks, photo by Ken Klancnik

past—and hope that your generosity will continue. If you've never donated before, this would be the perfect year to help us out.

Don't forget to tune in to Lake Geneva Radio station FM WLKG 96.1 to hear music synchronized with the fireworks display. We guarantee this will enhance the experience for your family and guests. For the second year, we are offering a chance for every \$100 donated, the donor will be entered into a drawing to select one of the songs (with committee approval) to play during the 2022 fireworks show. Kelley and Jeff Adams are last year's winners. Listen for their chosen song, "Thunder" by Imagine Dragons at this year's show.

With your generous donation, we look forward to continuing this cherished lake tradition. Please send your check payable to "**LLYC Safety & Ed Fund**" to: Mrs. Patti Jilek, Safety and Education Fund, N7860 West Shore Drive, Elkhorn, WI. 53121.

If you have questions, please call Jeff Angst at 262-853-2439.

Sailin' Away, Once Again!

By Glenn Hansen, LLSC Commodore

Hello Spring !!! The Lauderdale Lakes Sailing Club hopes you all had a safe and warm winter. But now it's time to get the boats ready for lake time. Last year was challenging in so many ways. Hopefully, we can put the issues of 2020 behind us and move forward to enjoy another great summer on Lauderdale Lakes. The sailing club likes to have a kick-off meeting to see familiar faces and welcome anyone interested in learning about the club. This year, we plan to **meet on the Sunday of Memorial Day weekend, May 30th**. This will be an outdoor event with social distancing and, unfortunately, we will not be having a brunch. We will share more details as we get closer to summer. If you sail or are interested in learning how to sail, come on out and meet about the most friendly and supportive group around. Our racing season will kick off the following Sunday and we race every Sunday through September. The sailboat we race, the MC Scow, is actually very low to the water. That being said, we really appreciate when other boaters give us just a little room while we are on the race course. It can make all the difference. If you have any questions about the Sailing Club, please reach out to one of us or visit our website: lauderdalelakesailingclub.com. Thank you and see you on the water.

Glenn Hansen (tug3900@gmail.com)
Ben Johnson (22.johnson.22@gmail.com)
Peter VanKampen (pvk1655@gmail.com)



John and Ben considering their options



Jack showing his typical perfect form

2021 Racing Schedule

May 30	Patio Meeting (Memorial Day Weekend)
June 6	Bud Weiser Trophy
June 13	Club Race
June 20	LLYC Regatta (1st race)
June 27	Des Johnson Trophy
July 4	Melges Cup
July 11	Ro Jo Trophy (Mill Lake)
July 18	New Trophy (TBA)
July 25	LLYC Regatta (2nd race)
Aug 1	Walsh Trophy
Aug 8	Beisswanger Trophy
Aug 15	LLYC Regatta (3rd race)
Aug 22	Bradley Trophy (Middle Lake)
Aug 29	Cartland Trophy
Sept 5	Ladies Appreciation Trophy (Labor Day Weekend)
Sept 12	Harry S. Truman (all 3 lakes) and Awards Picnic
Sept 18	Galvanized Cup – Lauderdale

Lutherdale Plans Summer Open House

By Jeff Bluhm, Lutherdale Executive Director

The brand new HOPE Conference Center is open at Lutherdale. The open house that was canceled last year due to the pandemic, is rescheduled for Saturday morning June 5 from 10-12. This wonderful facility now offers group conference options, a wedding venue, family reunions, day meetings, family gatherings and more. Come see what is new in the neighborhood.

Our **Dinners at the Lake** are open to the public and will be held on May 28, June 25, July 30, and August 13. Come enjoy a great meal with a great view of Green Lake.

Lutherdale has been open during the pandemic. Summer Camp will be happening again this summer. It will be our 78th year of summer camp

programs for youth. We will have 9 week-long programs and 5 weekend programs. There are different themes for each program such as Harry Potter, Inventor's Workshop, Olympic, Disney and more. If you have kids or grandkids looking for a fun option this summer, check out the full listing at www.lutherdale.org/programs/summercamp.



Bits & Pieces From The Town of LaGrange

By Don Henderson, LLIA Planning & Zoning Chair

Home Address Sign for Safety on Lakeshore

The Town Board approved a plan to have riparian lake shore owners place a second Home Address Sign on their property to be viewed from the water. This will assist the Fire Department and emergency rescue teams locate the closest point to reach people on the water in an emergency. Emergency calls made from a cell phone closest to the incident allow the central system to show the location of the caller. The current LL number signs are not part of the emergency management system to direct responders when 911 calls are placed from a cell phone. As the Town completes the plan for the second sign procurement and installation those riparian property owners will be notified.

Town Road Speed Limits

Currently the speed limit on unposted Town roads is 55 mph as established by Wisconsin State Statutes. Many streets and roads around the Lakes within the Town are populated by houses on adjacent lots that range from 50 to 100 feet wide. State Statutes provide guidance that speed limits of a maximum of 35 mph are permitted on roads and streets where home densities fall into a range of 5 or more per 1000 feet of road length and may be lowered to 25 mph following State DOT guidance. The Town Board has reviewed all streets and roads that meet these requirements. The Town Board, during the March 2021 meeting, approved a plan to document this information and establish 25 mph speed limits on roads meeting the DOT requirements. Speed limit signs will then be installed on the respective roads in the coming months.

Lauderdale LaGrange Fire Department

The Fire Department has a new website that is very comprehensive and user friendly: lfd.org. Need a burning permit? Go to the website and complete the application found under the **Community** Heading. Check out the new website and you will see much more about the Fire Dept.

Mark your calendar and save the date for the Annual Fire Department Steak Fry on August 14, 2021.

Fire Fighters are continuing to construct their new training building behind the Town Highway Maintenance building across from the Fire Station. Through the winter they have been fabricating doors, stairs and windows to install in the steel structure.

The Lauderdale Lakes Lake Management District: Keeping You In-The-Know

By Jack Sorenson, LLLMD Chairman

Although our early year meeting was cancelled due to the virus concerns, your Board has been very busy. I am happy to report that we have recently received four new DNR grants totaling over \$150,000; all to go toward the health and well-being of Lauderdale Lakes.

Water Safety Patrol. One of the most important items under review has been our safety response procedures covered in this issue. Additionally, the safety committee is now studying the use of Patrolmen wearing Body Cameras. I want to thank Commissioner Jim Kroepflin and his committee, Chief Blanke and his team, the Town of LaGrange, and Lauderdale LaGrange Fire Department for all of their enthusiastic efforts to improve safety on our lakes.

Boat Speaker Noise. As we approach spring please remind boat users in your families to be courteous by being mindful of their boat speaker volume; sound travels a long distance over the water. Our Board has heard many complaints about excessive volume and inappropriate content from boats with elevated speaker systems. We understand that Lake Geneva is considering an Ordinance proposed to limit the noise from a boat speaker to 75 feet. We will monitor its progress and will likely add it as an agenda item to our future meetings. Obviously, enforcement is difficult and the Ordinance calls for people who object to excessive noise to record evidence of the boat and then contact the safety patrol who would give warnings prior to citations. We prefer to inform users of these audio systems of their downside and ask for cooperation and respect of their fellow lake residents than to create laws establishing volume limits.

Aeration Systems. Town regulations currently allow aerators or bubblers to keep water from freezing in a wet boat house structure (and up to ten feet away), provided the riparian has received an annual permit from the

Town of LaGrange. Several residents would like to use aerators around their piers and boat lifts. The Lake District is reviewing this issue. A major question is one of safety with open water around more shoreline areas of the lake. Lake Beulah and Lake Geneva currently do not allow private parties to aerate or bubble. If you would like to share input on this, please contact any Board member.

The golf course is 100 years old this year!

Last year was a great year with the course finishing well in the black. We have continued with Clubhouse safety improvements over the winter and will be ready for another busy year. The course is in great shape. We have changed the old irrigation pumps allowing more efficient irrigation and Sparky is working on enlarging the forward tee boxes of holes #2 & #8, adding fairway drainage on hole #3, and removing bunkers on holes #1 and #7. Again, a big thank you to Kristy and Sparky! If you have questions regarding the golf course please call Commissioner Dean Bostrom.

Aquatic Weeds. Commissioner Greg Wisniewski has recently received a commitment for a grant to assist in funding the purchase of a new weed harvester. Our existing one has been well maintained throughout the years but is on its last legs. The replacement will be paid for utilizing the reserve account and grant funds from the DNR. Should you have questions please contact Commissioner Wisniewski.

Piers. If you are considering building or having a new pier built or significantly remodeled, you are required to get a pier permit. The Lake District handles the inspection process for the permit, which is

issued under Town authority. If the pier is found to be compliant (within the Town pier ordinance) the permit is issued. However, should the pier require a variance or be in a sensitive area it will require Town Board action. The hearing and enforcement are handled by the Towns of LaGrange or Sugar Creek. I want to thank Commissioner John Summers and Town Board Supervisor Marcia Sahag for their tireless work on reviewing the Pier Ordinance. If you have any questions please contact them.

Septic Systems. State law requires every typical septic system to be pumped at least once every three years. The Lake District does this for most electors. This activity allows for the District to be aware of any systems that may be breaching or threatening to harm our lake resource. If you have questions please call Commissioner John Summers.

Internet Service. We continue to monitor the installation of higher speed internet. Currently Edge Broadband has run fiber optic cable North along Hwy 12/67 from Hwy A and down Plantation Road and now along Sterlingworth Drive and Country Club Drive. I understand that their plan is to continue north along the east side of Lauderdale Lakes. If you are interested in being served by Edge, call them to express your interest. The phone number is 262-458-4220. They will add you to their mapping as they use this information to plan their service routing.

I understand that high speed Internet service in our area is provided on a first come first service basis. Therefore, should you use a different provider, I suggest calling them as well to relay your desire for higher speed services. The Lake District is not working with or endorsing any of the internet providers, but want to make you aware of the opportunities.

For more info, visit our website at lauderdalelakedistrict.com.



What To Do When An Accident Occurs On The Water

By Debbie Ferrari, LLIA Water Safety Chair

The Water Safety Patrol (WSP, a part of our Lake Management District), Lauderdale LaGrange Fire & Rescue Department (LLFD) and Town of LaGrange (Town) are evaluating how emergencies on our lakes are handled.

The unusually high recreational use of our lakes last summer put a spotlight on the need to ensure that effective and efficient procedures are in place to respond to emergencies.

The process starts with YOU at the moment an accident or emergency occurs. To ensure the best possible outcome, the following information was prepared by Chief Dave Nelson (LLFD), working with Commissioner Jim Kroeplin of our Lake District and Chief Ken Blanke (WSP).

What should I do if I have an emergency while on the water?

1. STAY CALM and CALL 911 from your cell phone. It is best if you call 911 directly from the place you need the assistance. This way the 911 dispatcher will likely be able to track your precise location using your phone's GPS. It also allows them to gather specific information about your emergency so that proper help can be dispatched quickly.
2. If you know the street address (also called the Fire Number) that is nearest to your location this will help as well. (LL numbers do not map in the dispatch system and are not of much use in an emergency situation).
3. Offer as much detail as you can about the situation. How many people are injured? Are they in the water? What are the injuries, etc.?

4. Make every effort to stay at the location of the incident until help arrives. Turn off your engine and drop the anchor. If you leave the scene, emergency responders may not arrive as quickly.
5. A person injured in the water may begin to panic. Jumping in to help a panicked victim may make the situation worse.
6. Never leave your boat unattended. Wear a life jacket when entering the water and use flotation devices to aid the victim.
7. If you suspect a spinal injury, keep the victim in-line, floating in the water. Do not make any attempts to remove them from the water unless there is a life-threatening situation. First responders have the necessary equipment to safely remove the victim from the water.
8. If the victim is in your boat and having a medical emergency, call 911 from your cell phone. However, IF YOU ARE ABLE, proceed to the Emergency Access Point at the pier by The Sterlingworth Condos in Mill Lake—AND TELL THE 911 OPERATOR OF YOUR INTENTIONS. Meeting the Ambulance there will speed up the transport time to the hospital.



Watch future issues of ShoreLines for updates as the emergency response processes evolve. Other recent actions include:

- A plan by the Town for lake shore owners to place a second home address sign along the shoreline to be easily visible from the water (see page 9).
- A spring water drill has been scheduled for Saturday, April 17th, coordinated by the LLFD and including the WSP. You may see rescue and patrol boats speeding on the lake with lights flashing and sirens blaring, but "This is a test of the Emergency Broadcast System" (as we used to hear on TV).





ShoreLines

Lauderdale Lakes Improvement Association

P.O. Box 542

Elkhorn, WI 53121



Photo by Steve Waeghe